

MD 180 BASIC L white

Item number **GTIN**
EM10055508 4015120055508



Technical data

GENERAL	
Device category	Outdoor motion detector
Product information	Please note the Explanation of circuit breaker in the download area of the product! Intense sunlight over a longer period of time can change the color tone.
User interface	Adjusting controller
Remote controllable	-
Conformity	CE, EAC, RoHS, WEEE
Warranty	5 years
ATTACHMENT	
Installation type	Surface mounting
Installation position	Wall
Type of connection	Push terminal
Connectable wire cross section	1,5 - 2,5 mm ²
HOUSING	
Dimensions	Length 102 mm x Width 55 mm x Height/Depth 66 mm
Weight	125 g
Material	UV-stabilised polycarbonate
Protection type	IP44
Permissible ambient temperature	-20 °C...+40 °C
Relative humidity	5 - 95 %, non-condensing
Colour	white, similar to RAL 9010
ELECTRICAL VERSION	
Control system	ON/OFF
Protection class	II
Nominal voltage	230 V AC / 50 Hz

Product description

- Motion detector with **180° field of detection** for convenient light switching
- Sensing and range adjustment due to revolving and tilting spherical head technology
- Large wiring area

Offers special product features such as:

- Zero-cross switching

In-rush current	40 A / 20 ms
Power consumption	0,5 W
Stand-by consumption	< 0.5 W

SENSORS

Detection angle	180° horizontally and vertically rotatable +/- 30°
Detection range diagonally	Ø 20 m
Detection range head-on	Ø 10 m
Field of detection	up to 157 m ²
Range adjustment	Mechanical
Recommended installation height	2,5 m
Max. mounting height	3 m
Light measurement	mixed light
Level of brightness	3 - 1000 lx

CHANNELS (LIGHTING / HVAC)

Number of light channels	1
Push button input HVAC	-
Number of parallel switchable detectors	6
Slave input	-
Constant light control	-
Channel	C1 Lighting
Function	Switching
Switching capacity	230 V/50 Hz 800 W/5 A (cos phi = 1) 500 VA/2,5 A (cos phi = 0,5) 250 W LED
Switch contact	make contact / non-floating
Push button input	-
Impulse mode	-

DATA SHEET

MD 180 BASIC L white

Item number **GTIN**
 EM10055508 4015120055508

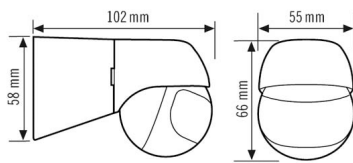
Switch-off delay time 10 s...15 min (adjustable in steps)

Factory settings

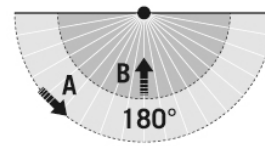
GENERAL	
Sensitivity	100 %

CHANNELS (LIGHTING / HVAC)	
Channel	C1 Lighting
Operating mode	fully automatic

Dimension drawing



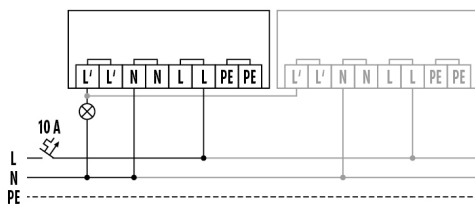
Field of detections



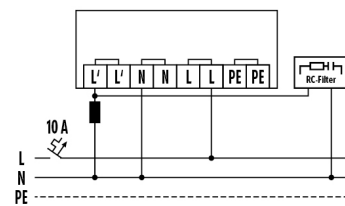
Detection range

Diagonally (A)	Ø 20 m
Frontal (B)	Ø 10 m

Circuit diagram



Circuit diagram



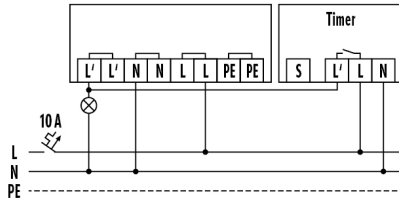
Standard operation with optional parallel wiring of max. six motion detectors.

When connecting inductors (e.g. relays, contactors, ballasts) the use of a filter (A) may be necessary.

MD 180 BASIC L white

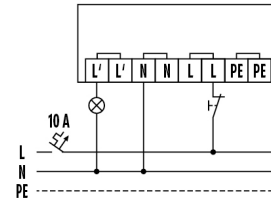
Item number **GTIN**
 EM10055508 4015120055508

Circuit diagram



Standard operation with automatic stairwell light.

Circuit diagram



Standard operation with the additional possibility of switching on by hand.

Detailed product description

- Motion detector with **180° field of detection** for convenient light switching
- Double diaphragm line entrance
- Connection base with push terminal and rear cable entry
- Large wiring area
- Sensing and range adjustment due to revolving and tilting spherical head technology
- For wall mounting